

Community prevention plan quality assessment tool

ABOUT THE TOOL

AIM

The prevention plan assessment form was developed to provide a framework for assessing the quality of local-level prevention plans. Experts can use the form to assess and provide recommendations for improving local communities' prevention action plans. The form could also be used by the communities themselves when developing their plans, providing guidance on which aspects should be kept in mind.

STRUCTURE

The assessment criteria are divided into four broad domains, each of which includes a number of indicators that can be rated on a scale from 0 to 2, with a higher scores indicating better quality. Additional comments can also be left in the form.

Questions in the form were based on the *EDPQS Toolkit 2: Quality Assessment Checklist*, and *The Community Tool Box* by the Center for Community Health and Development at the University of Kansas. Questions were condensed and adapted to address the entire prevention plan rather than individual prevention activities. The tool was then tested and modified.

CATEGORIES AND INDICATORS INCLUDED IN THE TOOL

GOALS AND INDICATORS

- Descriptions of goals
- Descriptions of activities
- Outcome indicators
- Process indicators

EVIDENCE- AND DATA- BASED APPROACH

- Internal consistency
- Needs assessment
- Evidence of effectiveness
- Appropriateness for target group
- Ethics of prevention activity selection

PRACTICAL CONSIDERATIONS

- Funding
- Human resources
- Roles and responsibilities
- Timeline
- Ethics of implementation and assessment

WIDER CONTEXT OF THE PREVENTION PLAN

- Links with the wider prevention agenda
- Stakeholder involvement
- Communication and advocacy

INTERACTIVE TOOL

An interactive online version of the assessment tool along with instructions for use can be accessed here <http://bit.ly/prevention-plan-assessment>.

USING THE TOOL (EXAMPLE)

1. CHOOSE THE APPROPRIATE ANSWER OPTION FOR EACH INDICATOR

2 The action plan refers to appropriate process indicators to assess if activities are happening as planned

1 The action plan refers to some process indicators but certain aspects are not covered OR better alternatives could be found for some indicators

0 The action plan does not refer to any process indicators OR the indicators are not appropriate for the planned activities

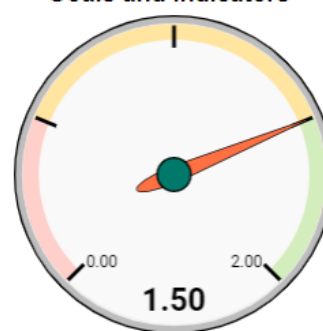
2. LEAVE COMMENTS TO EXPLAIN THE ASSESSMENT

Comments

Goal no. 3 is missing process indicators

3. AVERAGE SCORE FOR EACH CATEGORY IS CALCULATED AUTOMATICALLY

Goals and indicators



INTEGRATION WITH EDPQS

The assessment form is also linked with the EDPQS cycle, allowing evaluators to gain a broader idea of the progress a community has made across various prevention planning steps. In the interactive assessment tool, the EDPQS progress form fills in automatically based on information entered into the main assessment form.

