

Health Expectancy in Estonia

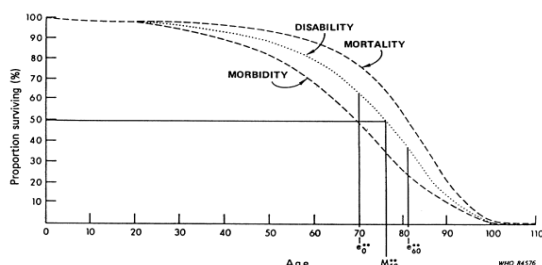
What is health expectancy?

Health expectancies were first developed to address whether or not longer life is being accompanied by an increase in the time lived in good health (the compression of morbidity scenario) or in bad health (expansion of morbidity). So health expectancies divide life expectancy into life spent in different states of health, from say good to bad health. In this way they add a dimension of quality to the quantity of life lived.

How is the effect of longer life measured?

The general model of health transitions (WHO, 1984) shows the differences between life spent in different states: total survival, disability-free survival and survival without chronic disease. This leads naturally to life expectancy (the area under the 'mortality' curve), disability-free life expectancy (the area under the 'disability' curve) and life expectancy without chronic disease (the area under the 'morbidity' curve).

The general model of health transition (WHO, 1984): observed mortality and hypothetical morbidity and disability survival curves for females, USA, 1980



e_0^{**} and e_{60}^{**} are the number of years of autonomous life expected at birth and at age 60, respectively.
 M_{50}^{**} is the age to which 50% of females could expect to survive without loss of autonomy.

There are in fact as many health expectancies as concepts of health. The commonest health expectancies are those based on self-perceived health, activities of daily living and on chronic morbidity.

How do we compare health expectancies?

Health expectancies are independent of the size of populations and of their age structure and so they allow direct comparison of different population sub-groups: e.g. sexes, socio-professional categories, as well as countries within Europe (Robine et al., 2003).

Health expectancies are most often calculated by the Sullivan method (Sullivan, 1971). However to make

valid comparisons, the underlying health measure should be truly comparable.

To address this, the European Union has decided to include a small set of health expectancies among its European Core Health Indicators (ECHI) to provide summary measures of disability (i.e., activity limitation), chronic morbidity and perceived health. Therefore the Minimum European Health Module (MEHM), composed of 3 general questions covering these dimensions, has been introduced into the Statistics on Income and Living Conditions (SILC) to improve the comparability of health expectancies between countries.* In addition life expectancy without long term activity limitation, based on the disability question, was selected in 2004 to be one of the structural indicators for assessing the EU strategic goals (Lisbon strategy) under the name of “Healthy Life Years” (HLY).

Further details on the MEHM, the European surveys and health expectancy calculation and interpretation can be found on www.eurohex.eu.

What is in this report?

This report is produced by the European Health and Life Expectancy Information System (EHLEIS) as part of a country series. In each report we present:

- Life expectancies and Healthy Life Years (HLY) at age 65 for the country of interest and for the overall 28 European Union member states (EU28), using the SILC question on long term health related disability, known as the GALI (Global Activity Limitation Indicator), from 2004 to 2014. The wording of the question has been revised in 2008.
- Prevalence of activity limitation in the country of interest and in the European Union based on the GALI question by sex and age group;
- Health expectancies based on the two additional dimensions of health (chronic morbidity and self-perceived health) for the country of interest, based on SILC 2014;
- Prevalence of activity limitation in Europe (EU28) in 2005, 2008, 2011 and 2014.

References

Jagger C., Gillies C., Moscone F., Cambois E., Van Oyen H., Nusselder W., Robine J.-M., EHLEIS Team. Inequalities in healthy life years in the 25 countries of the European Union in 2005: a cross-national meta-regression analysis. *The Lancet*. 2008;372(9656) 2124-2131
Robine J.-M., Jagger C., Mathers C.D., Crimmins E.M., Suzman R.M., Eds. *Determining health expectancies*. Chichester UK: Wiley, 2003.
Sullivan D.F. *A single index of mortality and morbidity*. HSMHA Health Reports 1971;86:347-354.
World Health Organization. *The uses of epidemiology in the study of the elderly: Report of a WHO Scientific Group on the Epidemiology of Aging*. Geneva: WHO, 1984 (Technical Report Series 706).

* Before the revision of 2008, the translations of the module used in some countries were not optimum (See Eurostat-EU Task Force on Health Expectancies common statement about the SILC data quality). This revision is being evaluated.

Life expectancy (LE) and Healthy Life Years (HLY) at age 65 for Estonia and the European Union (EU28) based on SILC (2004-2014)

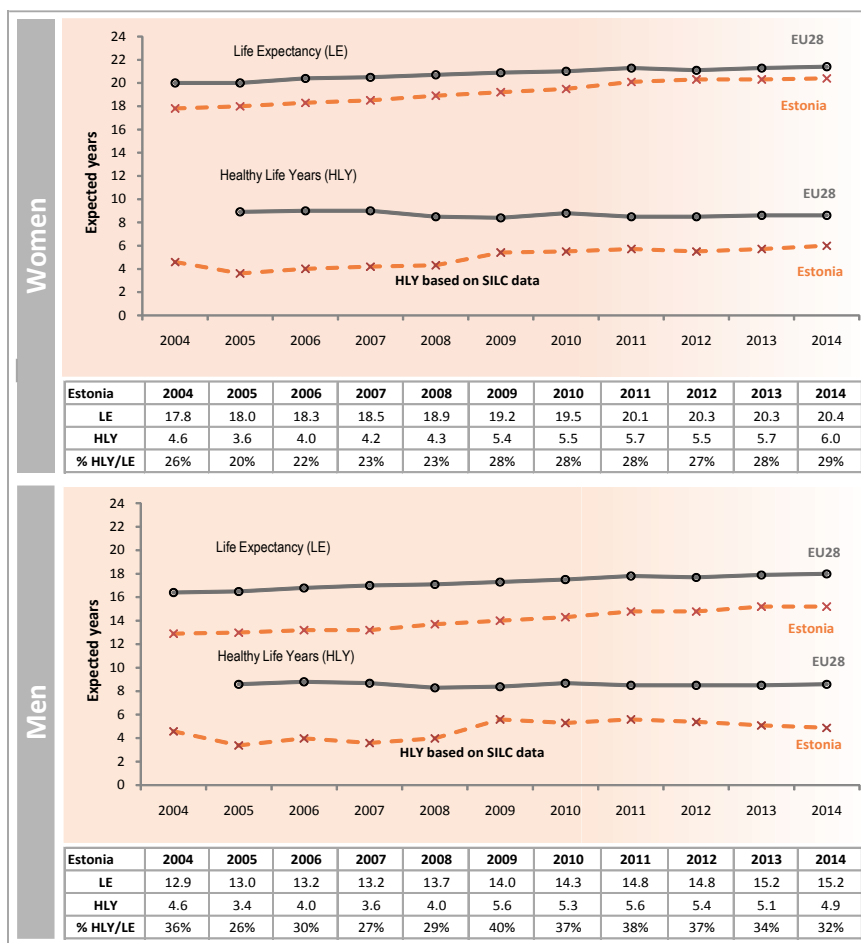
Key points:

Estonian life expectancy (LE) at age 65 has increased by 2.6 years for women and 2.3 years for men over the period 2004-2014. LE was below the EU28 average in 2014 (21.6 for women and 18.1 for men) although the gap with the EU28 average is reducing for women and men, women being much closer to the EU average than men.

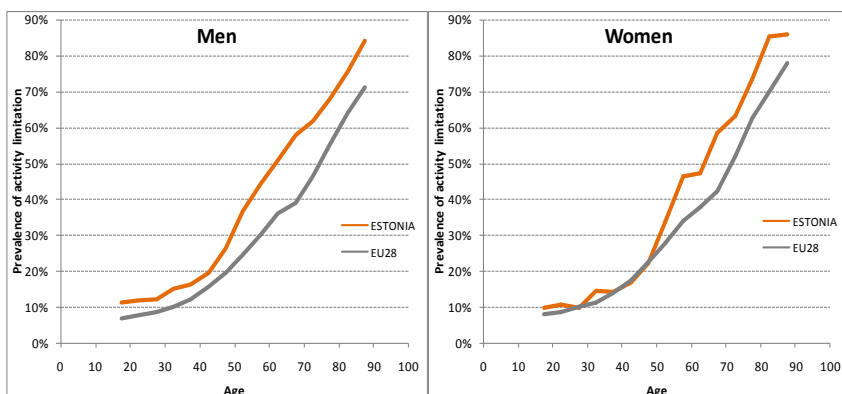
HLY series, initiated in 2004 with the SILC data, shows that in 2014 women and men at age 65 can expect to spend 29% and 32% of their life without *self-reported long-term activity limitations* respectively.

In 2014 the HLY values for Estonia are 2.6 years for women and 3.7 for men, below the EU28 average (8.6 for women and men).

The wording of the GALI question was changed in Estonia in 2008 to better reflect the EU standard. After a strong increase in 2009, HLY slightly increased for women and slightly decreased for men.



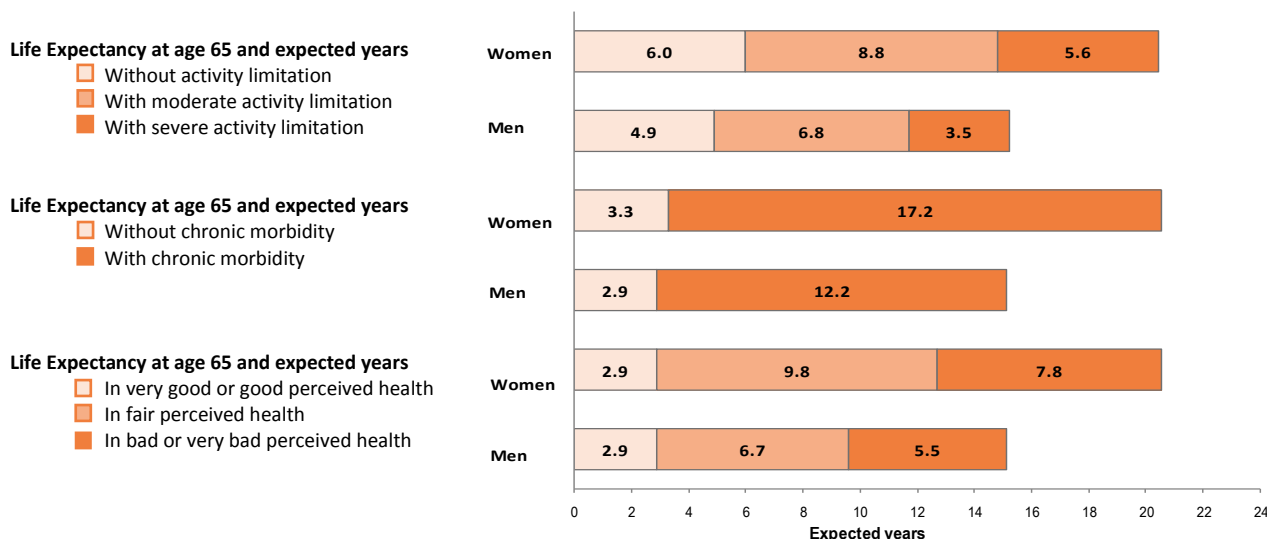
Prevalence of activity limitation in Estonia and in the European Union (EU28) based on the GALI question, by sex and age group (SILC, Mean 2012-2014)



Reports of limitation in usual activities strongly increase with age in the European Union and women systematically report slightly more activity limitation than men. Compared to the mean trajectory by age observed in the European Union in the 3 years (2012-2014), Estonia tends to display higher prevalence of activity limitation at all ages for men and at almost all ages except between 25 and 45 years for women.

Activity limitation in Estonia starts to increase already from age 45 for men and from age 50 for women. These results should be interpreted with caution as samples sizes in the SILC survey vary remarkably; for instance in 2014 they ranged from 5758 in Denmark to 40274 in Italy. In 2014, the sample size for Estonia comprised 6710 women and 5772 men aged 16 years and over.

Life and health expectancies at age 65 based on activity limitation (Healthy Life Years), chronic morbidity and perceived health for Estonia (Health data from SILC 2014)



Key points:

In 2014, LE at age 65 in Estonia was 20.4 years for women and 15.2 years for men.

Based on the SILC 2014, at age 65, women spent 6.0 years (29% of their remaining life) without activity limitation (corresponding to HLY), 8.8 years (43%) with moderate activity limitation and 5.6 years (28%) with severe activity limitation.*

Men of the same age spent 4.9 years (32% of their remaining life) without activity limitation compared to 6.8 years (45%) with moderate activity limitation and 3.5 years (23%) with severe activity limitation.*

Although the total years lived by women were 5.1 years higher than men, HLY is only slightly larger for women and other positive health expectancies are similar for both sexes. Compared to men, women spent a larger proportion of their life in ill health and these years of ill health were more likely to be years with severe health problems.

* These may not sum to Life Expectancy due to rounding

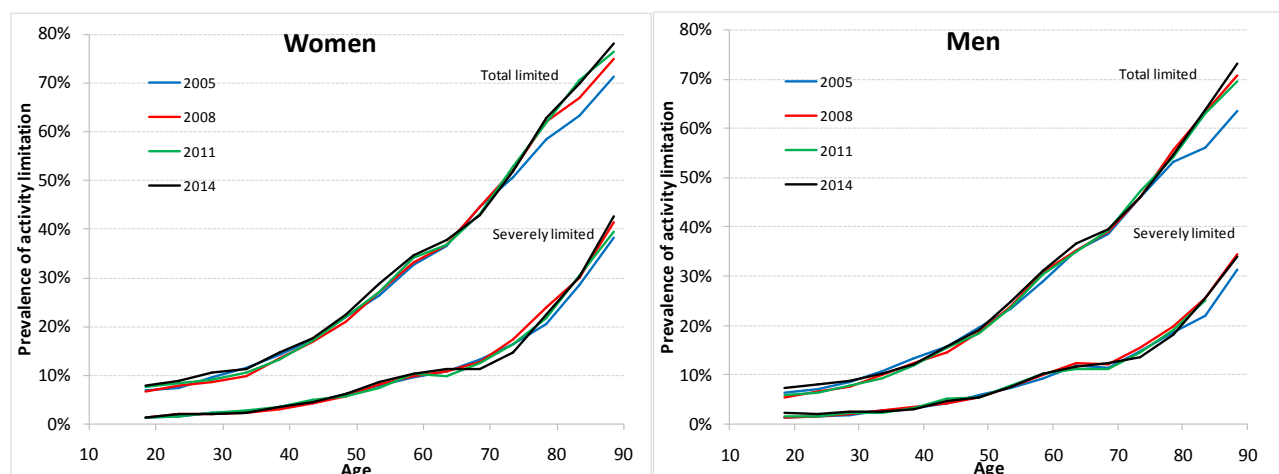
Publications and reports on health expectancies for Estonia

- Baburin, A., Lai, T., Leinsalu, M. (2011). Avoidable mortality in Estonia: Exploring the differences in life expectancy between Estonians and non-Estonians in 2005–2007. *Journal of Public Health*, 125 (11), pp. 754–762.
- Eesti piirkondlik areng. 2016. *Regional Development in Estonia*. Tallinn: Statistics Estonia; 2016. http://www.stat.ee/publication-download-pdf?publication_id=42570
- Jagger C., Robine J.-M., Van Oyen H., Cambois E. Life expectancy with chronic morbidity. In: European Commission, editor. *Major and chronic diseases - report 2007*. Luxembourg: European Communities; 2008. p. 291–304.
- Jasilionis, D.; Meslé, F.; Shkolnikov, V. M.; Vallin, J. (2011). Recent life expectancy divergences in Baltic countries. *European Journal of Population*, 27 (4), pp. 403–431.
- Karelson K. Eesti rahvastiku tervisekaotus 2013. aastal [Burden of disease of Estonian population 2013]: NIHD; 2015. <http://www.tai.ee/et/terviseandmed/uuringud/download/355>
- http://pxweb.tai.ee/esf/pxweb2008/Database_en/Population/07BurdenOfDisease/07BurdenOfDisease.asp
- Lai T., Köhler K. Burden of disease of Estonian population. *Policy brief Series of the Ministry of Social Affairs*. 2009(1):14. http://rahvatervis.ut.ee/bitstream/1/1861/2/Sotsiaalministeerium2009_2_inglisek.pdf
- Lai T., Habicht J., Kiivet R.A. Measuring burden of disease in Estonia to support public health policy. *Eur J Public Health* 2009;19(5):541–547
- Lai T., Baburin A., Vals K., Kiivet R. Suremusest ja haigestumusest põhjustatud tervisekadu Eestis [Health loss due to mortality and disease incidence: disease burden in Estonia]. *Eesti Arst* 2005; 84(7):466–47
- Lai T., Habicht J., Reinap M., Chisholm D., Baltussen R. Costs, health effects and cost-effectiveness of alcohol and tobacco control strategies in Estonia. *Health Policy*. 2007; 84:75–88.
- Naised ja mehed / Women and men*. Tallinn: Statistics Estonia; 2006.
- Puudega inimeste sotsiaalne lõimumine / Social Integration of Disabled People*. Tallinn: Statistics Estonia; 2014 <http://www.stat.ee/72564>
- Statistics Estonia, public database <http://pub.stat.ee>.
- The concept and calculation of disability-free life expectancy. *Quarterly bulletin of Statistics Estonia* 1/2012. <http://www.stat.ee/57663>
- Vals K., Lai T., Kiivet R. Rahvastiku tervisekaotus ehk haiguskoormus: hindamise meetodika [Methodology of burden of disease studies]. *Eesti Arst* 2005; 84(7):473–480.
- Vals K. *Haiguskoormuse tõttu kaotatud eluaastad Eestis [Health loss due to burden of disease in Estonia]*: University of Tartu; 2005.

Prevalence of activity limitation in Europe (EU28) in 2005, 2008, 2011 and 2014

Thanks to the EU-SILC survey, we now have 10 years of experience in measuring disability within the European Union. The survey really started in 2005 with 25 Member States (MS). In 2008, a coordinated revision of the translation of the GALI was made by some countries to better reflect the original standard. An evaluation made by Eurostat shows that in 2012 the translation of the GALI fully follows the English standard in 18 MS, partially in 8 others and still not in 5 MS. Progressively EU-SILC involved 27 then 28 MS but all the estimations provided below have been estimated for the EU28. The prevalence of disability among women and men is displayed by age and level of severity of the reported disability, from the age group 16-19 to 85+, for the calendar years 2005, 2008, 2011 and 2014.

Prevalence of activity limitation in Europe (EU28), by sex and age group, SILC EU28, 2005, 2008, 2011 and 2014



The revision of the translation of the GALI in 2008 significantly changed the age trajectory of the prevalence of disability, increasing the report of disability among the oldest participants in the EU-SILC survey, especially for those reporting being not severely limited in usual activities. Beyond this change between 2005 and 2008, the general pattern of the age trajectory remains almost unchanged over time. In particular, and especially for the severe limitation, we observed less rapid increase of the prevalence around the retirement age. Among men and women, the age standardized prevalence of reported disability increases over time (Table).

Standardized prevalence of activity limitation at age 15 and over (in %), SILC EU28, 2005, 2008, 2011 and 2014

The standardized rate of disability varies little over the years, even between 2005 and 2008 (period of changes in the instrument in some MS). Overall, these rates disclose a small increase over time in the prevalence of reported disability across the European Union.

	2005	2008	2011	2014
Men	23,0	23,1	23,0	23,9
(3-year gap)		(0,1)	(-0,1)	(0,8)
Women	27,8	28,2	28,6	29,3
(3-year gap)		(0,3)	(0,4)	(0,7)

BRIDGE-Health (Bridging Information and Data Generation for Evidence-based Health Policy and Research)

The **European Health and Life Expectancy Information System (EHLEIS)** is part of **BRIDGE-Health** which aims to prepare the transition towards a sustainable and integrated EU health information system within the third EU Health Program, 2014-2020 (www.bridge-health.eu).

